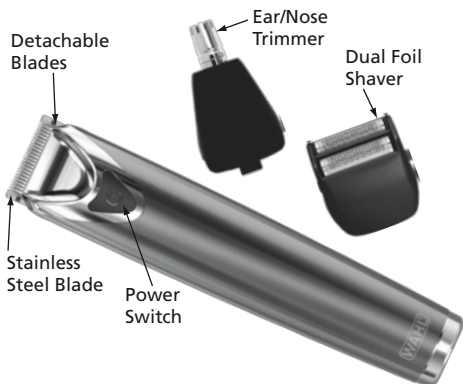
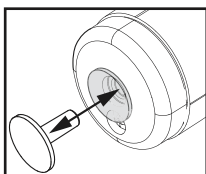


# Wahl® Platinum Edition Lithium•Ion+™ Trimmer Quickstart Guide



## 1 Remove Travel Plug

The travel plug is used to prevent the trimmer from accidentally powering on when traveling. When the travel plug is engaged, the power button will not function.



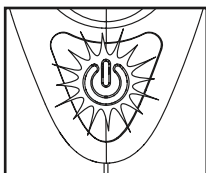
## 2 Charging 1st Time

Charge your Lithium Ion Stainless Steel Trimmer for 1 hour. Unit will not operate while plugged in.



## 3 Smart LED

A blinking light indicates the trimmer needs to be charged. A solid light indicates the trimmer is "ON" or being charged when the trimmer is plugged in. If the light goes off when the trimmer is plugged in, the unit is fully charged.



## 4 Trimmer Testing

All Wahl trimmers are tested before they leave our factory. Often, testing materials or grinding compound may be found on the blades. This is easily cleaned off.

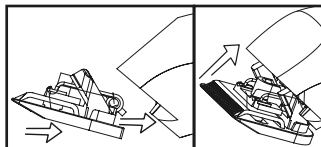
## 5 Oil Blades Regularly

Your Wahl trimmer blades were oiled before leaving our factory. For best results, put one or two drops of oil on the blades when necessary, or approximately once a month. Clean with the included brush.



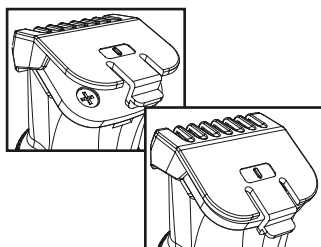
## 6 Detachable Blades

To remove attachment, simply pull top edge of blade away from body unit. To attach, align back tab of attachment head to cavity on the inner edge of trimmer unit and push down on top of blade.



## 7 Attaching Guide Combs

Align comb on blade, then press tab until you hear a snap.



## 8 Easy to Follow Instructions

Follow the easy style guidebook for perfect facial hair every time.